

How Much Can the AIMM Nurse Save You?



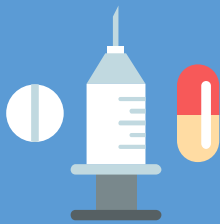
Unnecessary doctor visits can add up quickly:

Dr. Office visit = \$120
Lab work = \$45
X-ray = \$75
Tier 3 Rx = \$80
One visit = \$320



MRI's can cost thousands of dollars, unless you have inside info:

Methodist Hospital = \$2,123
Bryan Medical = \$1,783
Nebraska Spine Center = \$379



Prescriptions can be quite expensive unless you are armed with information first:

Vimovo arthritis prescription medication = not covered

Nexium & Aleve = over the counter: 30 day supply \$25



When you call, ask about the preventive care services that are right for you and your family.

By using AIMM as your personal medical concierge, you will avoid costly medical bills and improve your health!

877-217-7695